



# Office of the Governor – Guam Medical Referral Office

P.O. Box 2950 Hagåtña, Guam 96932

Telephone: (671) 475-9350/353/428

Facsimile: (671) 472-7557

**FELIX PEREZ CAMACHO**  
THE HONORABLE GOVERNOR OF GUAM

**MICHEAL W. CRUZ M.D.**  
THE HONORABLE LIEUTENANT GOVERNOR

February 27, 2009

To: Governor of Guam  
Lt. Governor of Guam  
Speaker's Office  
Office of the Public Auditor-electronic version through email [ycabrera@guamopa.org](mailto:ycabrera@guamopa.org)  
Senator Frank B. Aguon, Jr.

2009 FEB -2 AM 10:33 AM

From: Director, Guam Medical Referral Office

Subject: Monthly Report

Attached is the January 2009 monthly report of activities as required to be submitted at the end of the month.

This report is only for the Philippines, Honolulu, and Los Angeles, California. Any reference to the Guam office is incorporated in the Governor's Office report. Please note that this report includes those already scheduled to depart.

Please note that the outsourcing contract of the Philippines, Honolulu and Los Angeles offices, have officially been signed by the governor on June 24, 2008. Full implementation of outsourcing took effect on July 1, 2008.

Please feel free to contact me should you need any further assistance on this matter by calling our office at 475-9353/9350.

Peter Alexxis Ada

Cc: Chief(s) of Staff: J. George Bamba and Carlotta Leon Guerrero  
BBMR  
BIT  
GMRO Copy

30-09-0285  
Office of the Speaker  
Judith T. Won Pat, Ed. D.  
Date 2/27/09  
Time  
Received by

Enclosure

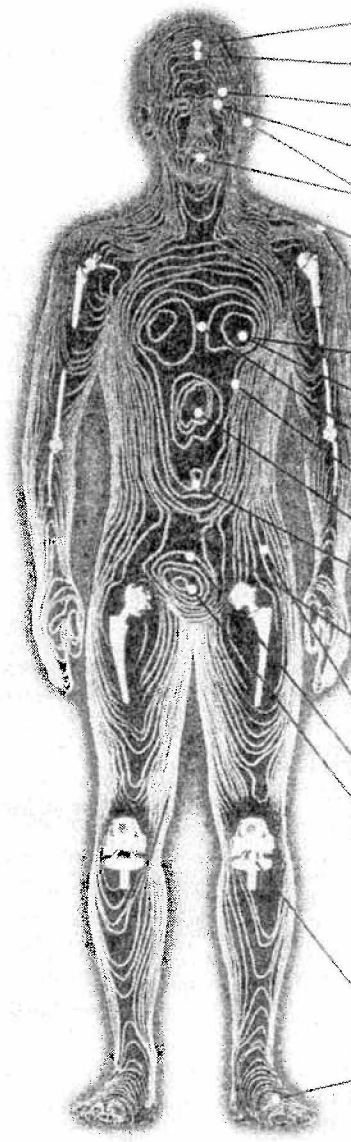
0291

*Guam Medical Referral Office*

**February 2009 Monthly Report**



# CAUSES FOR REFERRAL



|                                | Philippines | Hawaii                | LosAngeles |
|--------------------------------|-------------|-----------------------|------------|
| Mental Health/Psychiatry       |             |                       | 1          |
| Neurology                      | 2           |                       |            |
| Ophthalmology                  |             |                       |            |
| Optometrist                    | 2           | 1                     |            |
| Otorhinolaryngology            |             |                       |            |
| Orthodontist                   | 3           |                       |            |
| Dermatology                    | 2           | 1                     | 1          |
| Cardiovascular                 | 3           |                       |            |
| Surgery - Cardiovascular       | 2           | 1                     | 1          |
| Surgery - Vascular             | 1           | 1                     |            |
| Pulmonary Disease              |             |                       |            |
| Surgery - Neurology            | 2           | 1                     | 1          |
| Gastroenterology (Abdominal)   | 3           | 1                     | 1          |
| Spinal Column                  | 1           | 1                     |            |
| CANCER                         | 11          | 3                     | 6          |
| Nephrology                     | 1           |                       | 3          |
| Obstetrics & Gynecology        | 1           | 1                     | 2          |
| Urology                        | 2           |                       | 1          |
| HIP (dysplasia, surgery)       | 2           | 2                     |            |
| DIABETIC                       | 2           | 2                     | 1          |
| Surgery - Orthopedics          | 5           | 1                     | 1          |
| Podiatry                       | 2           | 2                     |            |
| Complete Physical Examination: |             |                       |            |
| Second Opinion:                | 10          |                       |            |
|                                | 5           |                       |            |
| OTHER                          | 2           |                       | 1          |
| <b>TOTAL :</b>                 | <b>64</b>   | <b>18</b>             | <b>20</b>  |
|                                |             | <b>Grand Total</b>    | <b>102</b> |
|                                |             | <b>for the month:</b> |            |

**February 2009**

# GUAM MEDICAL REFERRAL OFFICE MONTHLY REPORT

| Facility                             | No. Processed | MIP/Medicaid | StayWell  | TakeCare  | Select Care | NetCare  | Medicare | Workmens Comp. | VA | Military | Self Pay | Other |
|--------------------------------------|---------------|--------------|-----------|-----------|-------------|----------|----------|----------------|----|----------|----------|-------|
| <b>PHILIPPINE OUT BOUND</b>          |               |              |           |           |             |          |          |                |    |          |          |       |
| Asian Hospital                       | 1             |              |           |           |             | 1        |          |                |    |          |          |       |
| St. Luke's                           | 61            | 11           | 12        | 25        | 7           |          |          |                |    | 6        |          |       |
| Medical City                         |               |              |           |           |             |          |          |                |    |          |          |       |
| Other                                | 2             |              |           |           |             |          |          |                |    | 1        | 1        |       |
| <b>TOTAL PATIENT FOR PHILIPPINES</b> | <b>64</b>     | <b>11</b>    | <b>12</b> | <b>25</b> | <b>8</b>    |          |          |                |    | <b>7</b> | <b>1</b> |       |
| <b>TOTAL ESCORT FOR PHILIPPINES</b>  | <b>81</b>     |              |           |           |             |          |          |                |    |          |          |       |
| <b>HAWAII OUT BOUND</b>              |               |              |           |           |             |          |          |                |    |          |          |       |
| Kapiolani                            | 1             |              |           |           |             |          | 1        |                |    |          |          |       |
| Pali Momi                            |               |              |           |           |             |          |          |                |    |          |          |       |
| Queen's                              | 1             |              |           | 1         |             |          |          |                |    |          |          |       |
| Shriners                             | 1             |              |           |           |             |          |          |                |    |          | 1        |       |
| Straub Clinic                        | 7             |              |           | 4         |             | 3        |          |                |    |          |          |       |
| Tripler                              | 8             |              |           |           |             |          |          | 7              |    |          | 1        |       |
| Other                                |               |              |           |           |             |          |          |                |    |          |          |       |
| <b>TOTAL PATIENT FOR HAWAII</b>      | <b>18</b>     |              |           | <b>5</b>  |             | <b>4</b> |          | <b>7</b>       |    |          | <b>2</b> |       |
| <b>TOTAL ESCORT FOR HAWAII</b>       | <b>24</b>     |              |           |           |             |          |          |                |    |          |          |       |
| <b>LOS ANGELES OUT BOUND</b>         |               |              |           |           |             |          |          |                |    |          |          |       |
| Anaheim                              | 3             |              | 1         | 2         |             |          |          |                |    |          |          |       |
| Cedar Sinai                          | 2             |              |           | 1         | 1           |          |          |                |    |          |          |       |
| Children's Hospital: Millers & LA    | 6             | 4            | 1         |           |             | 1        |          |                |    |          |          |       |
| Good Samaritan                       | 4             | 2            |           |           | 1           | 1        |          |                |    |          |          |       |
| Loma Linda                           |               |              |           |           |             |          |          |                |    |          |          |       |
| Long Beach                           | 1             |              |           | 1         |             |          |          |                |    |          |          |       |
| St. Johns                            | 1             |              | 1         |           |             |          |          |                |    |          |          |       |
| St. Vincent                          |               |              |           |           |             |          |          |                |    |          |          |       |
| UCLA                                 | 2             |              |           | 1         | 1           |          |          |                |    |          |          |       |
| White Memorial                       |               |              |           |           |             |          |          |                |    |          |          |       |
| Other                                | 1             |              |           |           | 1           |          |          |                |    |          |          |       |
| <b>TOTAL PATIENT FOR LOS ANGELES</b> | <b>20</b>     | <b>6</b>     | <b>3</b>  | <b>4</b>  | <b>5</b>    | <b>2</b> |          |                |    |          |          |       |
| <b>TOTAL ESCORT FOR LOS ANGELES</b>  | <b>21</b>     |              |           |           |             |          |          |                |    |          |          |       |
| <b>TOTAL PATIENT FOR MONTH</b>       | <b>102</b>    |              |           |           |             |          |          |                |    |          |          |       |
| <b>TOTAL ESCORT FOR MONTH</b>        | <b>125</b>    |              |           |           |             |          |          |                |    |          |          |       |
| <b>TOTAL EXPIRED FOR MONTH *</b>     | <b>2</b>      |              |           |           |             |          |          |                |    |          |          |       |
| <b>ACCUMULATIVE TO DATE</b>          | <b>3129</b>   |              |           |           |             |          |          |                |    |          |          |       |

**Government of Guam**  
**Report for the month of February 2009**  
**Budget Digest**

**GUAM**

| <b>A5400<br/>Account<br/>code</b> | <b>Appropriation<br/>Classification</b> | <b>FY 2009<br/>Expenditures &amp;<br/>Encumbrances</b> |
|-----------------------------------|---|--|
|                                   | <b>PERSONNEL SERVICES</b>               |  |
| 111                               | Regular Salaries/Increments             | 0  |
| 112                               | Overtime/Special Pay                    | 0  |
| 113                               | Benefits                                | 0  |
|                                   | <b>OPERATIONS</b>                       |  |
| 230                               | Contractual services:                   | 0  |
| 233                               | Office space rental:                    | 0  |
| 240                               | Supplies & materials:                   | 0  |
| 250                               | Equipment:                              | 0  |
| 270                               | Workers compensation                    | 0  |
| 271                               | Drug testing                            | 0  |
| 280                               | Sub-recipient/sub grant                 | 0  |
| 290                               | Miscellaneous                           | 0  |
|                                   | <b>UTILITIES</b>                        |  |
| 361                               | Power                                   | 0  |
| 362                               | Water/sewer                             | 0  |
| 363                               | Telephone/toll                          | 0  |
| 450                               | <b>CAPITAL OUTLAY</b>                   | 0  |

Note: The Guam office operation and budget are under the Governor's office budget submission

**Government of Guam  
Report for the month of February 2009  
Budget Digest**

**PHILIPPINES**

| <b>A5400<br/>Account<br/>code</b> | <b>Appropriation<br/>Classification</b> | <b>FY 2009<br/>Expenditures &amp;<br/>Encumbrances</b> |
|-----------------------------------|---|--|
|                                   | <b>PERSONNEL SERVICES</b>               |  |
| 111                               | Regular Salaries/Increments             | 0  |
| 112                               | Overtime/Special Pay                    | 0  |
| 113                               | Benefits                                | 0  |
|                                   | <b>OPERATIONS</b>                       |  |
| 230                               | Contractual services:                   | \$42,556.80  |
| 233                               | Office space rental:                    | 0  |
| 240                               | Supplies & materials:                   | 0  |
| 250                               | Equipment:                              | 0  |
| 270                               | Workers compensation                    | 0  |
| 271                               | Drug testing                            | 0  |
| 280                               | Sub-recipient/sub grant                 | 0  |
| 290                               | Miscellaneous                           | 0  |
|                                   | <b>UTILITIES</b>                        |  |
| 361                               | Power                                   | 0  |
| 362                               | Water/sewer                             | 0  |
| 363                               | Telephone/toll                          | 0  |
| 450                               | <b>CAPITAL OUTLAY</b>                   | 0  |
|                                   | <b>TOTAL<br/>APPROPRIATIONS</b>         | <b>\$42,556.80</b>                                     |

**Notation**

|   |             |
|---|-------------|
| Amount expended for February only                                 | \$14,185.60 |
| Number of <b>Patients</b> sent to Philippines for <b>February</b> | 64          |
| Amount spent per patient in Philippines for <b>February</b>       | \$221.65    |
| Number of <b>Escorts</b> sent to Philippines for February         | 81          |
| Number of patients sent to Philippines for <b>Cumulative 2008</b> | 336         |

**Government of Guam  
Report for the month of February 2009  
Budget Digest**

**LOS ANGELES**

| <b>A5400<br/>Account<br/>code</b> | <b>Appropriation<br/>Classification</b> | <b>FY 2009<br/>Expenditures &amp;<br/>Encumbrances</b> |
|-----------------------------------|---|--|
|                                   | <b>PERSONNEL SERVICES</b>               |  |
| 111                               | Regular Salaries/Increments             | 0  |
| 112                               | Overtime/Special Pay                    | 0  |
| 113                               | Benefits                                | 0  |
|                                   | <b>OPERATIONS</b>                       |  |
| 230                               | Contractual services:                   | \$48,707.89  |
| 233                               | Office space rental:                    | 0  |
| 240                               | Supplies & materials:                   | 0  |
| 250                               | Equipment:                              | 0  |
| 270                               | Workers compensation                    | 0  |
| 271                               | Drug testing                            | 0  |
| 280                               | Sub-recipient/sub grant                 | 0  |
| 290                               | Miscellaneous                           | 0  |
|                                   | <b>UTILITIES</b>                        |  |
| 361                               | Power                                   | 0  |
| 362                               | Water/sewer                             | 0  |
| 363                               | Telephone/toll                          | 0  |
| 450                               | <b>CAPITAL OUTLAY</b>                   | 0  |
|                                   | <b>TOTAL<br/>APPROPRIATIONS</b>         | <b>\$48,707.89</b>                                     |

**Notation**

|   |             |
|---|-------------|
| Amount expended for February only                                 | \$16,235.96 |
| Number of <b>Patients</b> sent to Los Angeles for <b>February</b> | 20          |
| Amount spent per patient in Los Angeles for February              | \$ 811.78   |
| Number of <b>Escorts</b> sent to Los Angeles for <b>February</b>  | 21          |
| Number of patients sent to Los Angeles for <b>Cumulative 2009</b> | 76          |

**Government of Guam  
Report for the month of February 2009  
Budget Digest**

**HONOLULU**

| <b>A5400<br/>Account<br/>code</b> | <b>Appropriation<br/>Classification</b> | <b>FY 2009<br/>Expenditures &amp;<br/>Encumbrances</b> |
|-----------------------------------|---|--|
|                                   | <b>PERSONNEL SERVICES</b>               |  |
| 111                               | Regular Salaries/Increments             | 0  |
| 112                               | Overtime/Special Pay                    | 0  |
| 113                               | Benefits                                | 0  |
|                                   | <b>OPERATIONS</b>                       |  |
| 230                               | Contractual services:                   | \$56,170.40  |
| 233                               | Office space rental:                    | 0  |
| 240                               | Supplies & materials:                   | 0  |
| 250                               | Equipment:                              | 0  |
| 270                               | Workers compensation                    | 0  |
| 271                               | Drug testing                            | 0  |
| 280                               | Sub-recipient/sub grant                 | 0  |
| 290                               | Miscellaneous                           | 0  |
|                                   | <b>UTILITIES</b>                        | 0  |
| 361                               | Power                                   | 0  |
| 362                               | Water/sewer                             | 0  |
| 363                               | Telephone/toll                          | 0  |
| 450                               | <b>CAPITAL OUTLAY</b>                   | 0  |
|                                   | <b>TOTAL<br/>APPROPRIATIONS</b>         | <b>\$56,170.40</b>                                     |

**Notation**

|  |             |
|--|-------------|
| Amount expended for February only                            | \$18,723.46 |
| Number of <b>Patients</b> sent to Hawaii for <b>February</b> | 18          |
| Amount spent per patient in Hawaii for February              | \$ 1,040.19 |
| Number of <b>Escorts</b> sent to Hawaii for <b>February</b>  | 24          |
| Number of patients sent to Hawaii for <b>Cumulative 2009</b> | 104         |



## ESTIMATED COST PER PATIENT

| <b>Site</b>                         | <b>1stQuarter<br/>Expenditure</b> | <b>Number of<br/>Patients<br/>Served</b> | <b>Total Cost per<br/>patient for the<br/>quarter</b> |
|-------------------------------------|-----------------------------------|--|---|
| <b>Honolulu</b>                     | \$18,723.46                       | 18                                       | 1,040.19  |
| <b>Los Angeles</b>                  | \$16,235.74                       | 20                                       | 811.78  |
| <b>Philippines<br/>(Outsourced)</b> | \$14,185.60                       | 64                                       | 221.65  |

**Note:** *This figure is estimated because BBMR has not yet closed its books for the quarter.*